

CASE STUDY

STEVE LEIGH & ASSOCIATES Ltd's 'GROUNDBREAKER' WATER MANAGEMENT SYSTEM

Background

Steve Leigh & Associates (UK) produces a water management system 'Groundbreaker' which includes a stop tap, and a concentric water meter installation point.

The unit is designed for installation above ground, mounted upon the wall of a house or fixed point (e.g. free standing post or landlords supply).

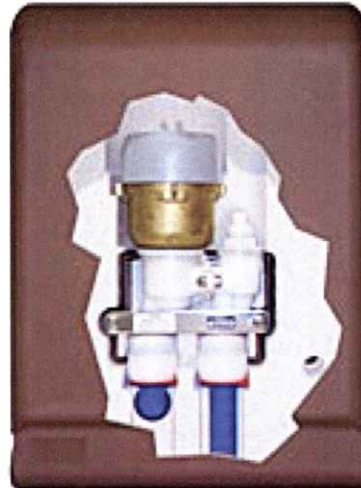
Scope of assessment

To assess the performance of the Groundbreaker Water Management System, for providing a metered potable water supply, with stop tap and drain down port, in a "Customer Convenient" location.

To assess the performance requirements of the product against the relevant sections in WIS 4-37-02 and WIS 4-23-04.

To check the quality control procedures used in-house for production of the product.

To assess the suitability of materials of construction.



Programme

1. A factory audit was undertaken of production facilities, and quality control.
2. A technical audit of type testing was carried out. Selected tests covered dimensions and tolerances; Materials compliance with BS 6920: Part 1, Hydraulic pressure test, Hydraulic performance: Head loss, Freezing test, Insulation material durability test, and performance of the non-return valve. In addition the service connections were tested for end-load resistant.
3. An audit of the guidance to users was undertaken.

Results

The tests demonstrated that the 'Groundbreaker' (water management system) meets the requirements of Assessment Schedule ETC/123/1200 which draws upon WIS 4-37-02 and WIS 4-23-04.

Appropriate QA in production was demonstrated and the guidance provided to users was found to provide the information required to correctly install the product.

A certificate (ETC/123/1200) was awarded in December 2000 for Groundbreaker. The product meets the requirements set out in assessment schedule ETC/123/1200-AS.

© WRc plc 2001

Contact: WRc plc, Frankland Rd, Blagrove, Swindon SN5 8YF
Tel: 01793 865000 Fax: 01793 865001 E-Mail: www.wrcapproved.com